

SORTER

(Machine Code: A322)



1. SPECIFICATION

Paper Size for Bins:	Maximum: A3 (lengthwise) or 11" x 17" (lengthwise) Minimum: A5 (sideways) or 5 1/2" x 8 1/2" (sideways and lengthwise)
Copy Paper Weight:	50 - 90 g/m ² or 14 - 24 lb
Number of Bins:	15 bins + interruption bin (total 16 bins)
Bin Capacity:	Sort mode: 50 sheets/bin (A4 or 8 1/2" x 11") Stack mode: 40 sheets/bin (A4 or 8 1/2" x 11")
Top Bin Capacity:	150 sheets (A4 or 8 1/2" x 11")
Print Bin Capacity:	40 sheets/bin (80 g/m ² or 20 lb)
Interrupt Bin Capacity:	100 sheets (A4 or 8 1/2" x 11")
Power Source:	DC 24V from the copier
Power Consumption:	0.03 kW
Dimensions (W x D x H):	499 x 535 x 600 mm 19.6" x 21.1" x 23.6"
Weight:	22 kg, 48.5 lb
Interface Requirement:	A sorter adapter is needed.

2. MAJOR DIFFERENCES FROM THE A511 (CS210)

- The number of bins has been changed. (Requests from the field.)

Sorter for This Machine	Sorter for Base Copier
15 bins + interruption bin	10 bins + interruption bin + print bin

- The exterior color has been changed. (New corporate identity color)

3. INSTALLATION (LILY)

3.1 ACCESSORY CHECK

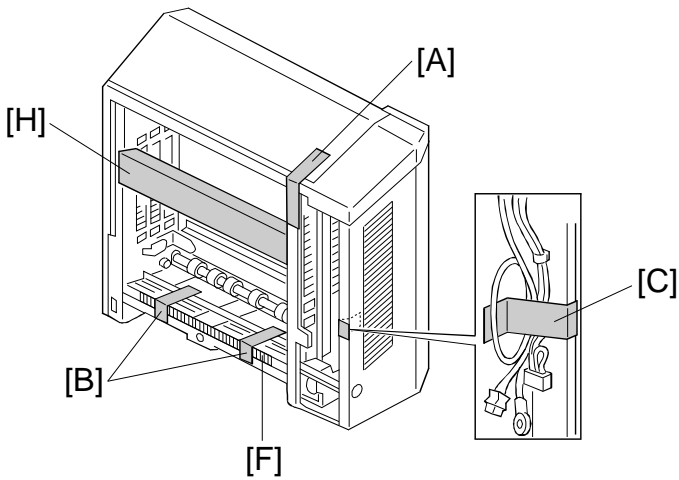
Check the accessories against the following list:

Description	Q'ty
1. Installation Procedure.....	1
2. NECR (-17 only)	1
3. Stud	2
4. Knob Screw	2
5. Sorter Bin.....	15
6. Interrupt Bin	1
7. Grounding Screw	1

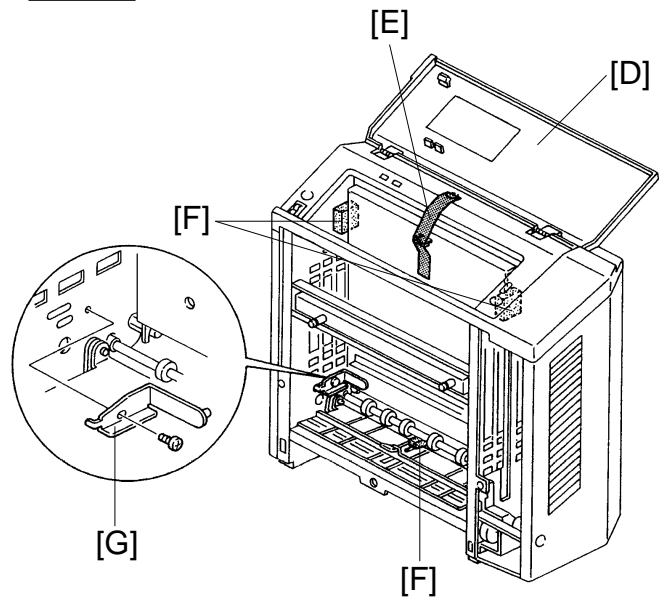
Sorter Adapter

Description	Q'ty
1. Fan Motor Assembly.....	1
2. Air Outlet Plate.....	1
3. Harness Clamp.....	2
4. Relay Harness	1
5. Guide Plate Assembly	2
6. Philips Pan Head Screw - M4 x 6.....	9

3.2 INSTALLATION PROCEDURE



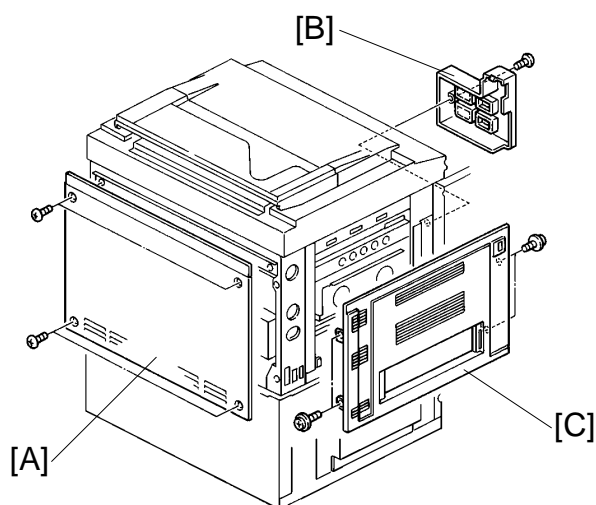
A322I500.wmf



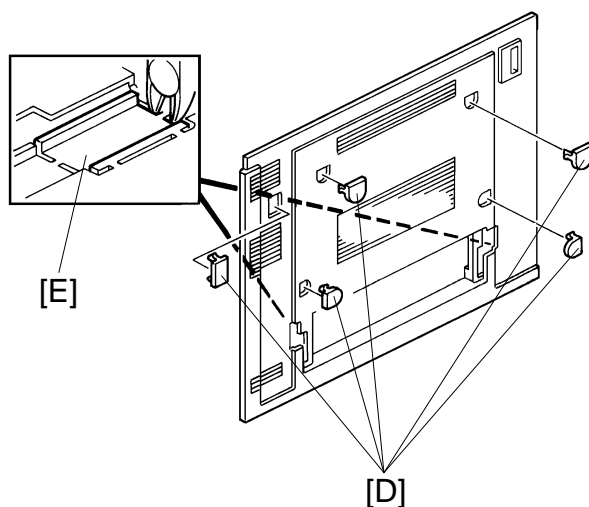
A322I501.img

NOTE: To install this sorter on the A172/A199 copier, the A527 sorter adapter kit (option) is necessary.

1. Remove four pieces of tape:
 Sorter Top Cover [A] (1 pc)
 Transport Guide [B] (2 pcs)
 Sorter Harness [C] (1pc)
2. Open the top cover [D] and remove the following items:
 Tape [E] (1 pc)
 Cushion [F] (4 pcs)
 Clamp [G] (1 pc) [1 screw]
 Cardboard [H] (1 pc)

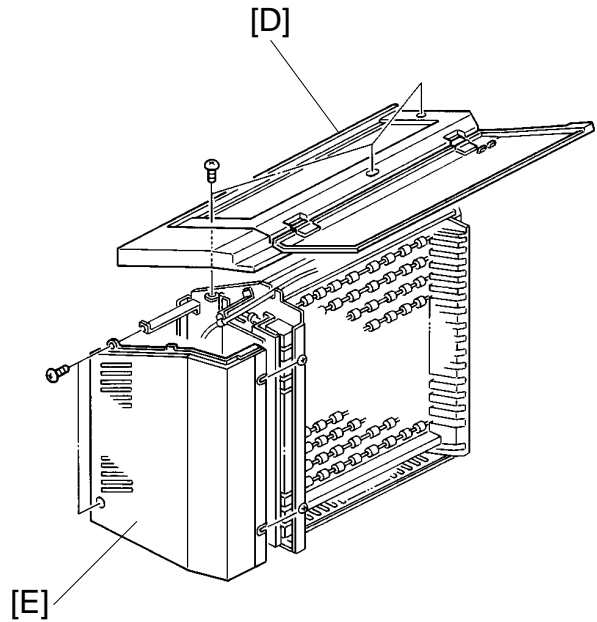
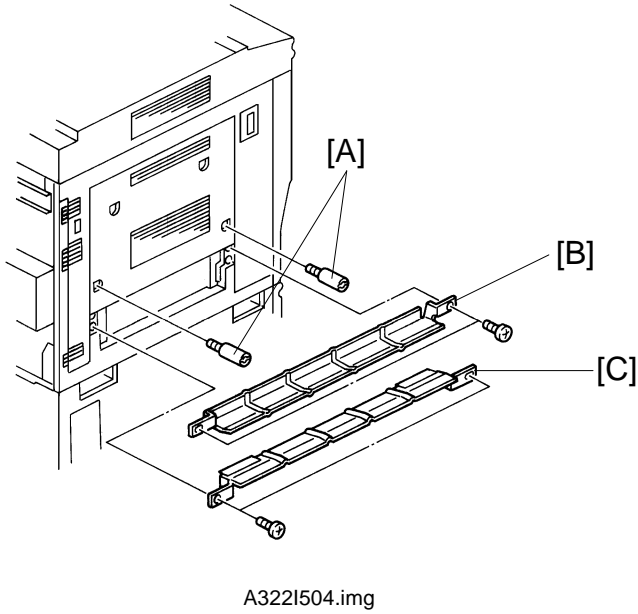


A322I502.img

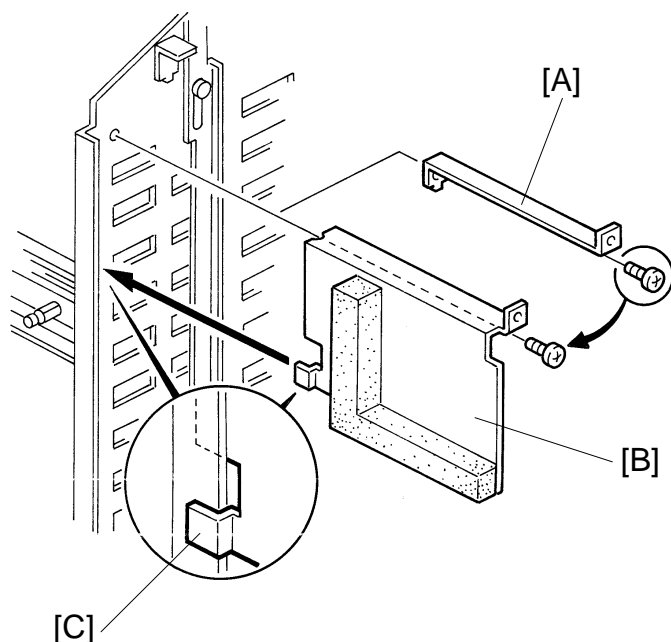


A322I503.img

3. Remove the upper rear cover [A] (4 screws).
4. Open the front doors, then remove the left inner cover [B] (1 screw).
5. Remove the upper left cover [C] (4 screws).
6. Remove the 5 caps [D].
7. Remove the portion of the cover [E] with cutting pliers as shown.
8. Reinstall the upper left cover.



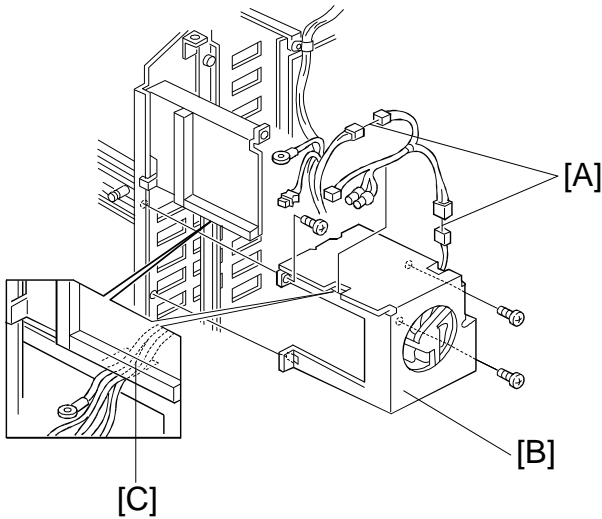
9. Install the studs [A].
10. Install the upper guide plate [B] (2 screws).
11. Install the lower guide plate [C] (2 screws).
12. Remove the sorter top cover [D] (3 screws).
13. Remove the sorter rear cover [E] (4 screws).
14. Remove the sorter front cover (2 screws).



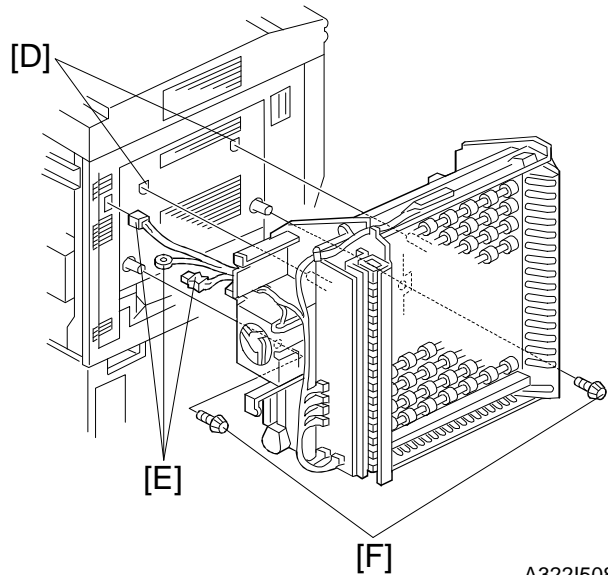
A322I506.img

15. Remove the rear cover mounting bracket [A] (1 screw).
16. Install the air outlet plate [B] where the rear cover mounting bracket was previously installed (1 screw). Use the screw which was used for the rear cover mounting bracket.

NOTE: Make sure the air outlet plate hook [C] engages the sorter rear frame as shown.

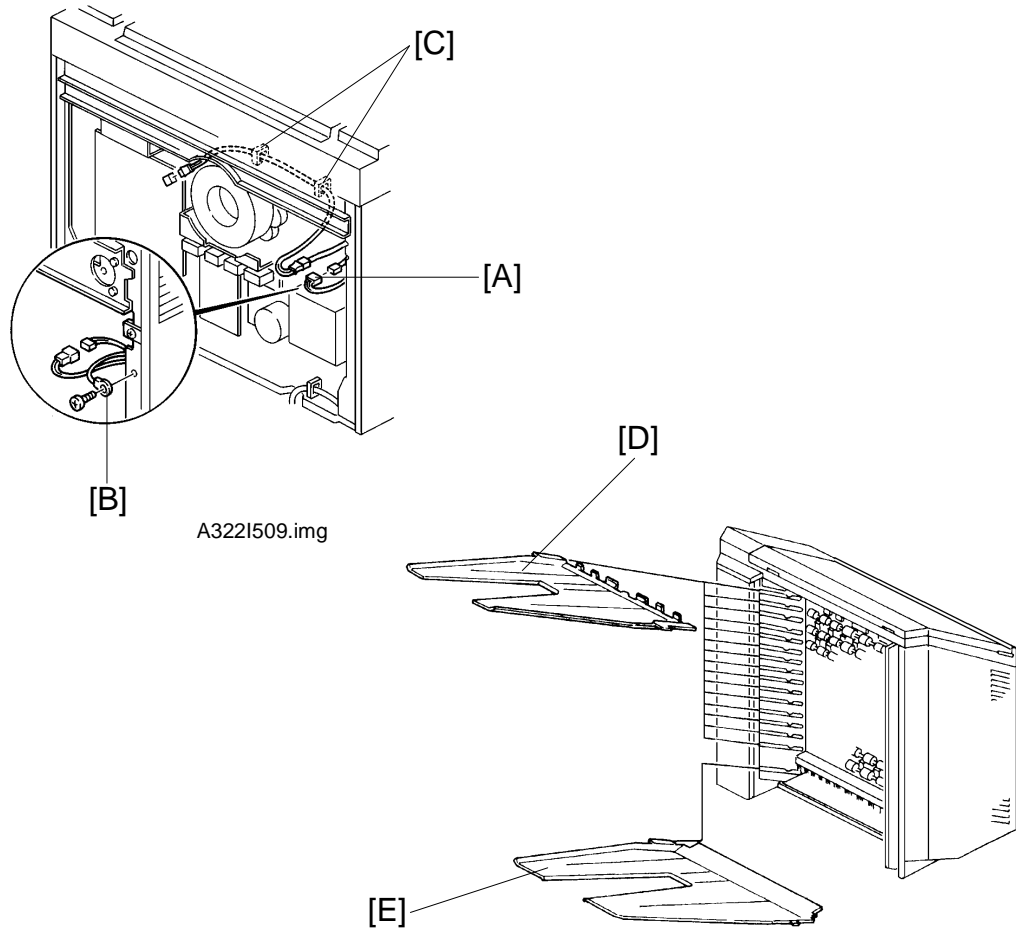


A322I507.wmf



A322I508.wmf

17. Connect the accessory harness connectors [A] to the fan assembly connectors.
18. Install the fan assembly [B] on the sorter rear frame (3 screws and 1 connector).
NOTE: Make sure to run the harness through the cutout [C] as shown.
19. Install the sorter into the mounting holes [D] on the copier while inserting the sorter harnesses [E] through the opening in the left cover (connect the 2 studs of the copier to the sorter).
20. Attach the sorter to the copier with two screws (2 knob screws [F]).



21. Remove the protective cover and secure the 4p connector [A].
22. Secure the grounding wire [B]* (1 grounding screw with toothed washer).
NOTE*: For all models other than those intended for North America, the green wire is intended as a functional earth and should be connected as shown.
23. Install two wire clamps [C].
24. Connect the fiber optics connector to CN515 of the main control board.
25. Insert all 15 sorter bins [D].
26. Insert the interrupt bin [E].
27. Install all covers on the copier and the sorter.
28. Check machine operation.